



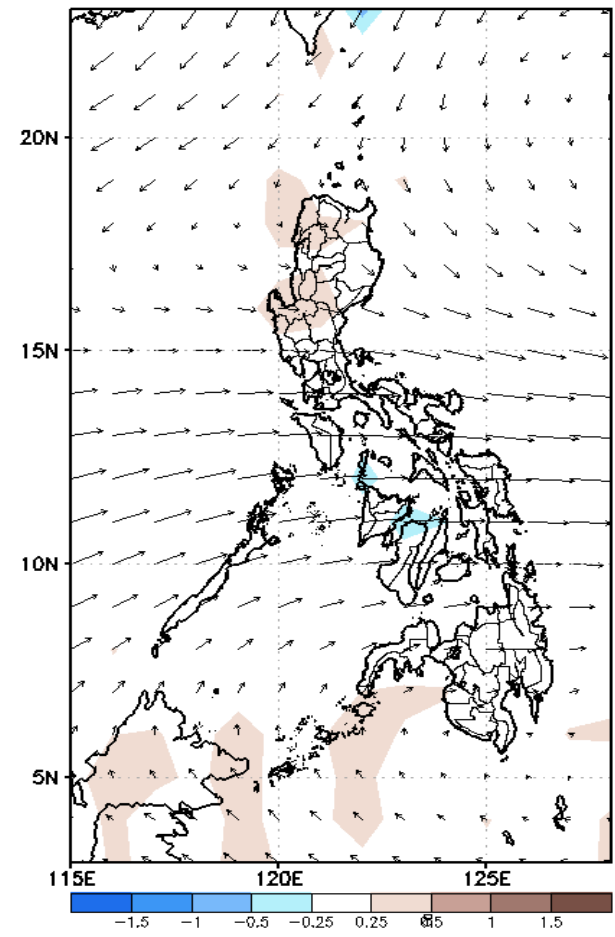
Week 1 & Week 2 Forecast for the Philippines using GEFS Model



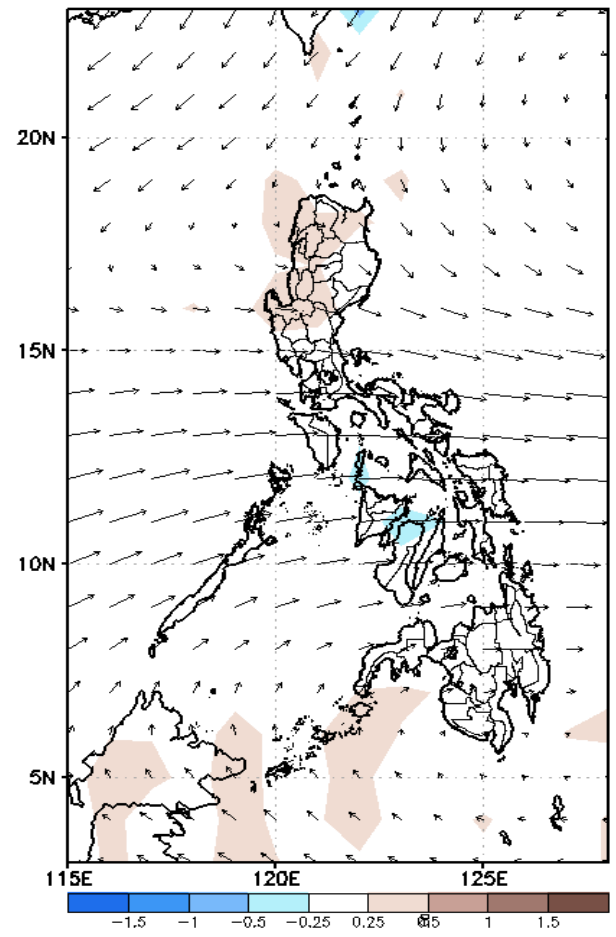
GEFS Week-1 Forecasts: Wind Anomaly Forecast

Week 1: Sep 19-25, 2022

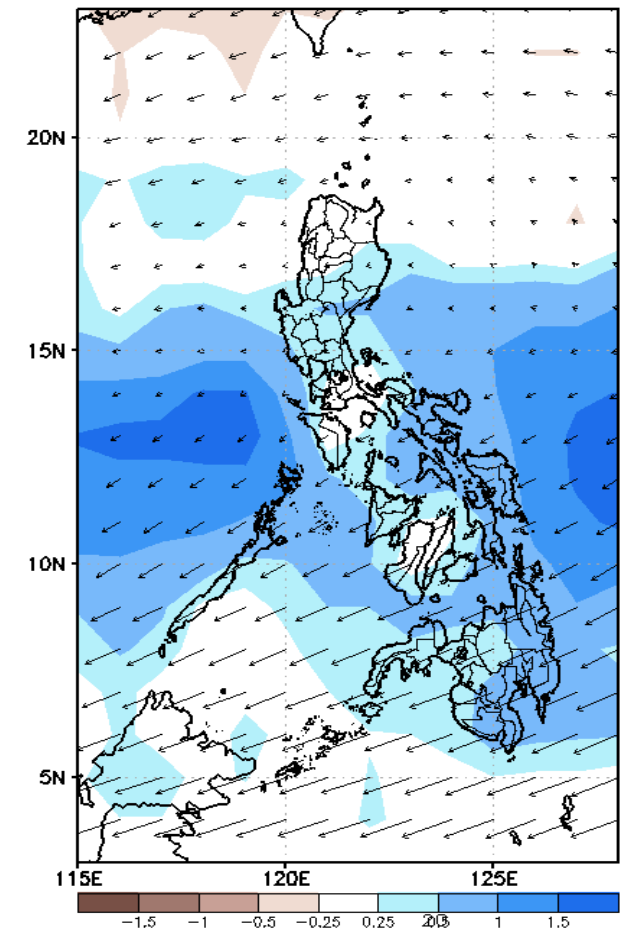
GEFS Week-1 850-hPa Divergence and Wind Anomc
Valid: 20220919 - 20220925



GEFS Week-1 700-hPa Divergence and Wind Anom
Valid: 20220919 - 20220925



GEFS Week-1 200-hPa Divergence and Wind Anomc
Valid: 20220919 - 20220925

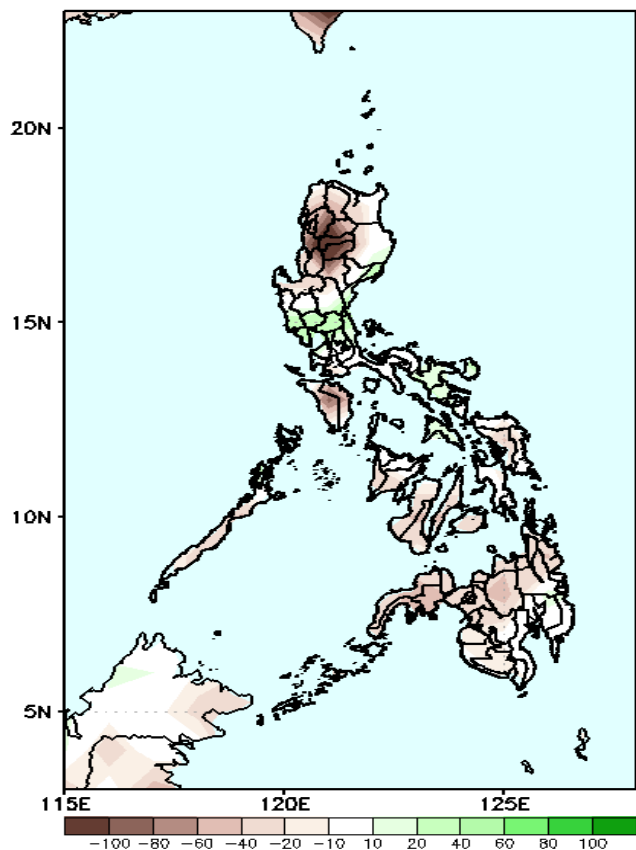


Northeasterly windflow affecting some areas in Northern Luzon while Southwest Monsoon affecting most areas in the country during the forecast period.

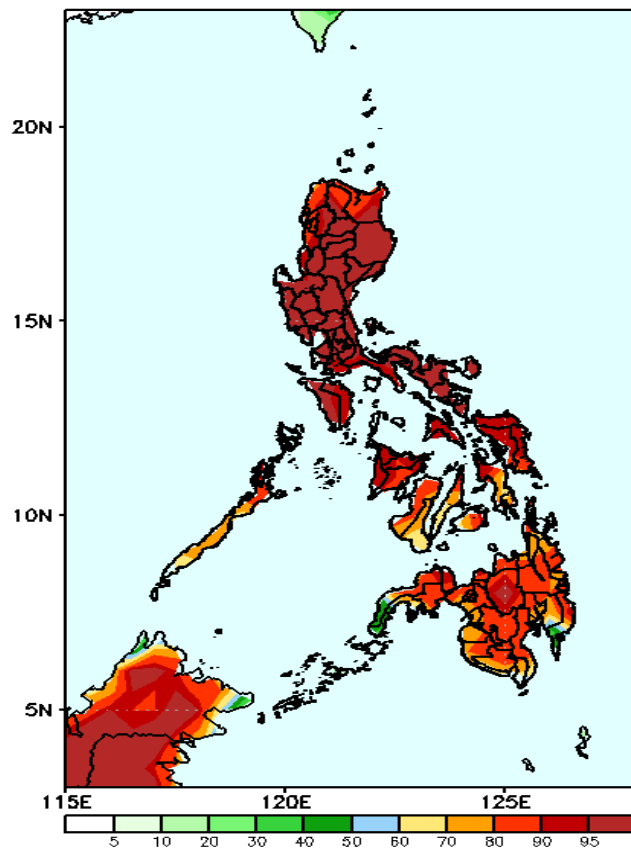
Precipitation Anomaly and Exceedance Probability > 25/50 mm

Week 1: Sep 19-25, 2022

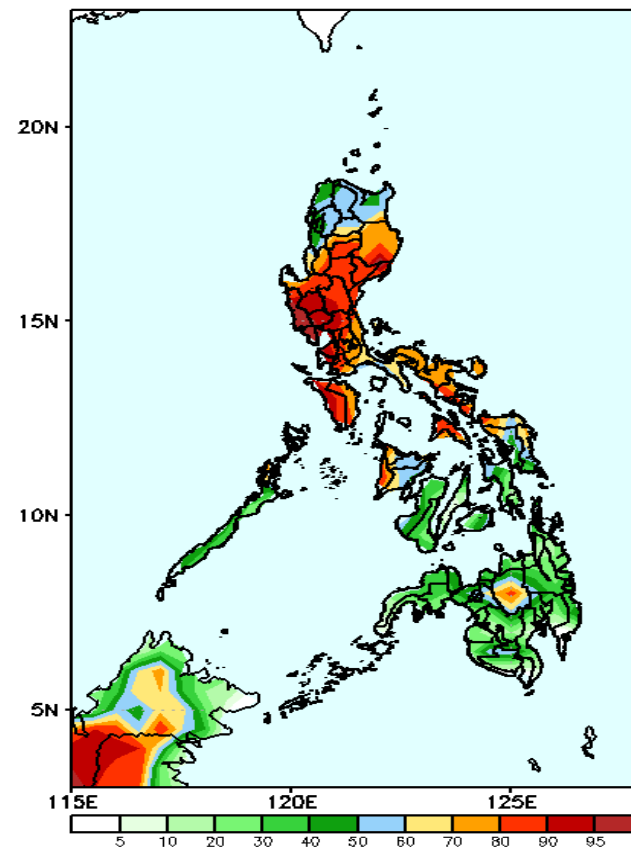
GEFS Week-1 Precip Anomaly
Valid: 20220919 - 20220925



GEFS Week-1 Exceedance Prob. > 25mm
Valid: 20220919 - 20220925



GEFS Week-1 Exceedance Prob. > 50mm
Valid: 20220919 - 20220925



Rainfall deficit of more than 100mm is expected in most parts of Ilocos & Cordillera Region and 40-80mm in Visayas and Mindanao while 20-40mm increase of rainfall in some areas in Central Luzon during the forecast period.

High probability of rainfall to exceed 25mm in most parts of the country during the forecast period.

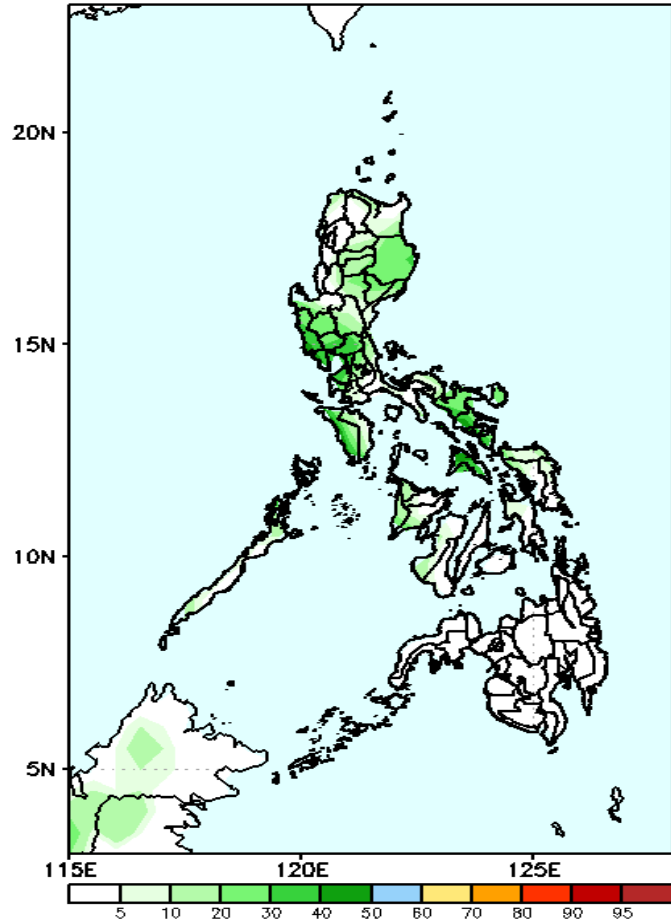
High probability of rainfall to exceed 50mm in most parts of Luzon (except extreme parts), Panay Island, Samar provinces and Bukidnon while less likely for the rest of the country during the forecast period.



Exceedance Probability > 100/150/200 mm

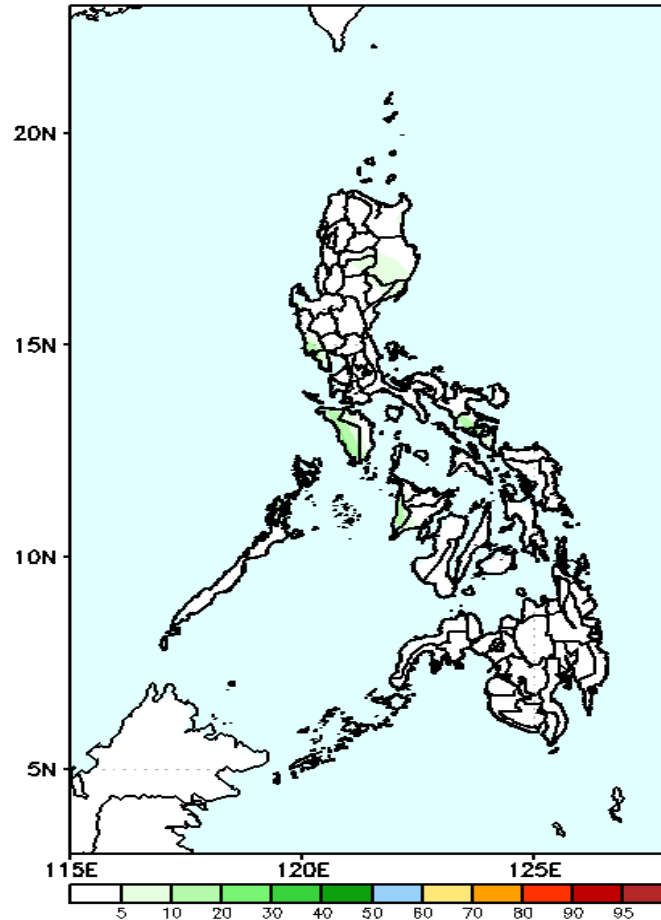
Week 1: Sep 19-25, 2022

GEFS Week-1 Exceedance Prob. > 100mm
Valid: 20220919 - 20220925



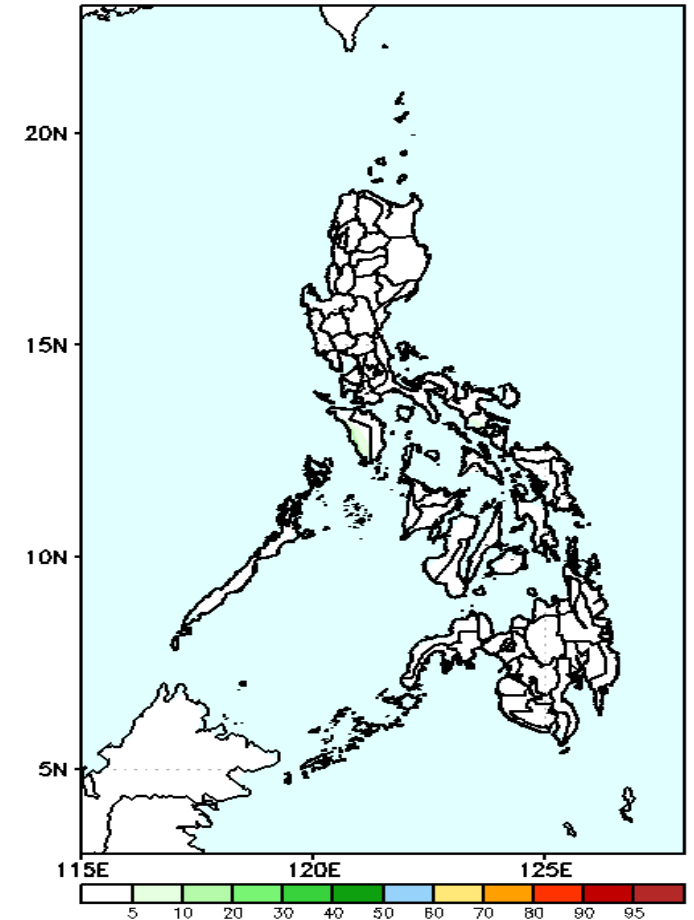
Low probability of rainfall to exceed 100mm in most parts of the country during the forecast period.

GEFS Week-1 Exceedance Prob. > 150mm
Valid: 20220919 - 20220925



Low probability of rainfall to exceed 150mm in most parts of the country during the forecast period.

GEFS Week-1 Exceedance Prob. > 200mm
Valid: 20220919 - 20220925

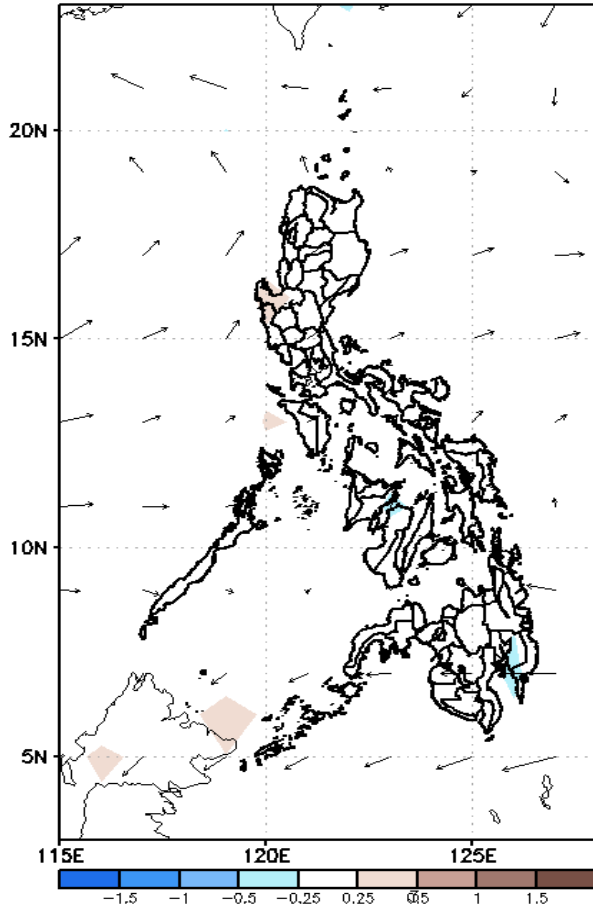


Low probability of rainfall to exceed 200mm in most parts of the country during the forecast period.

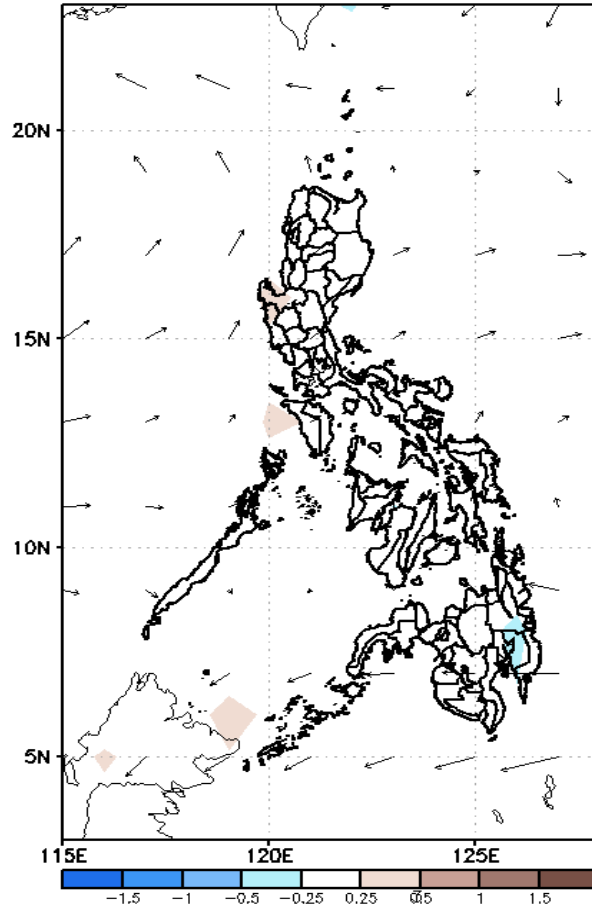
GEFS Week-2 Forecasts: Wind Anomaly Forecast

Week 2: Sep 26- Oct 02, 2022

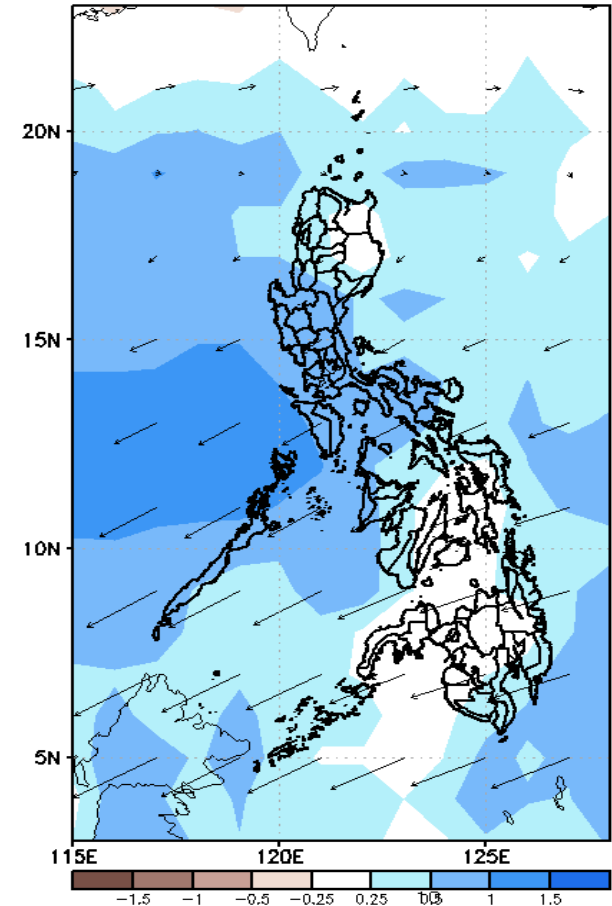
GEFS Week-2 850-hPa Divergence and Wind Anom
Valid: 20220926 - 20221002



GEFS Week-2 700-hPa Divergence and Wind Anom
Valid: 20220926 - 20221002



GEFS week-2 200-hPa Divergence and Wind Anom.
Valid: 20220926 - 20221002

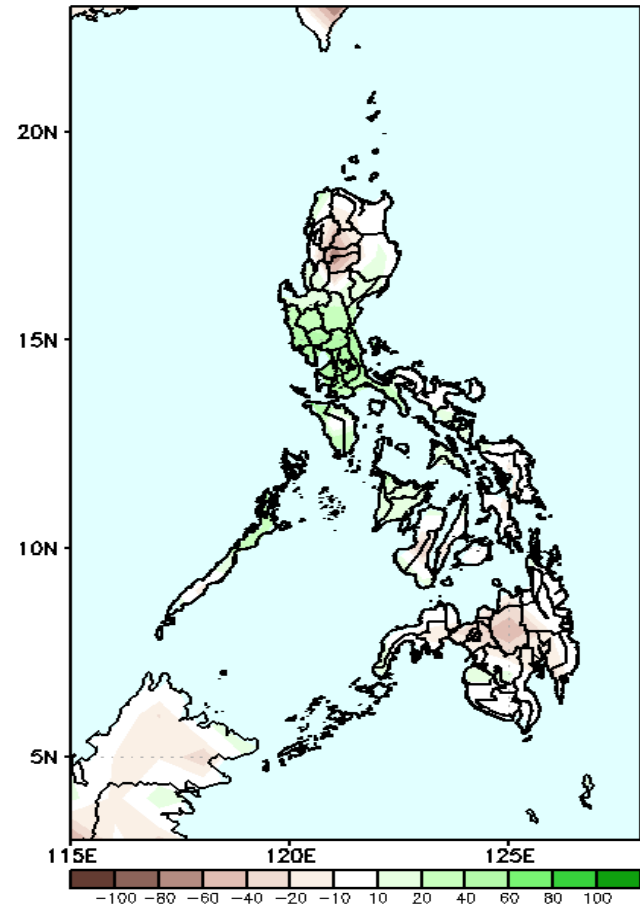


Southwest Monsoon affecting most parts of Luzon and Visayas while Easterlies affecting Mindanao during the forecast period.

Precipitation Anomaly and Exceedance Probability > 25/50 mm

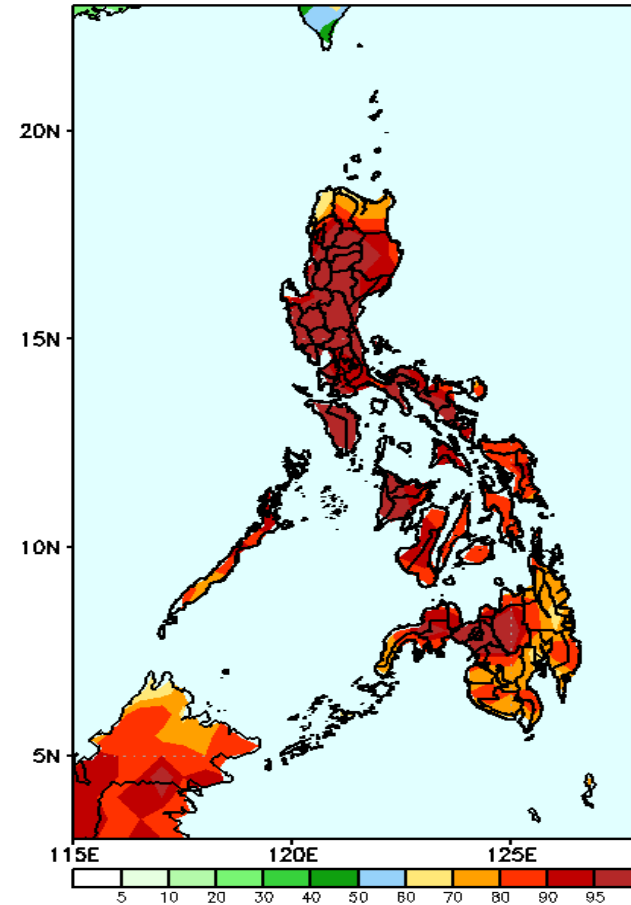
Week 2: Sep 23-29, 2022

GEFS Week-2 Precip Anomaly
Valid: 20220926 - 20221002



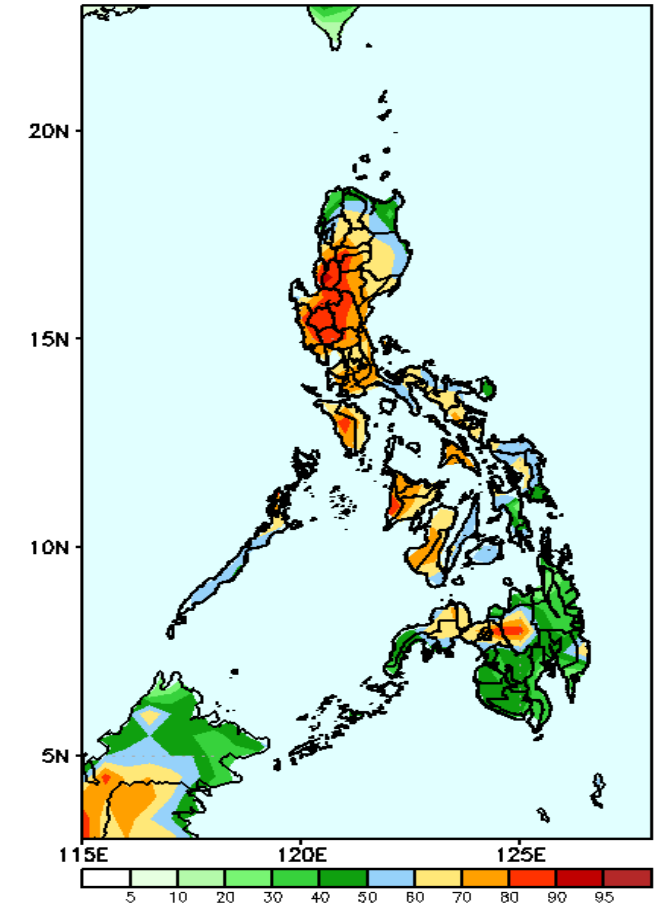
Rainfall deficit of 40-70mm is expected in Cordillera Region and Bukidnon while 20-80mm increase of rainfall in most of Central & Southern Luzon and Panay Island during the forecast period.

GEFS Week-2 Exceedance Prob. > 25mm
Valid: 20220926 - 20221002



High probability of rainfall to exceed 25mm in most parts of the country during the forecast period.

GEFS Week-2 Exceedance Prob. > 50mm
Valid: 20220926 - 20221002

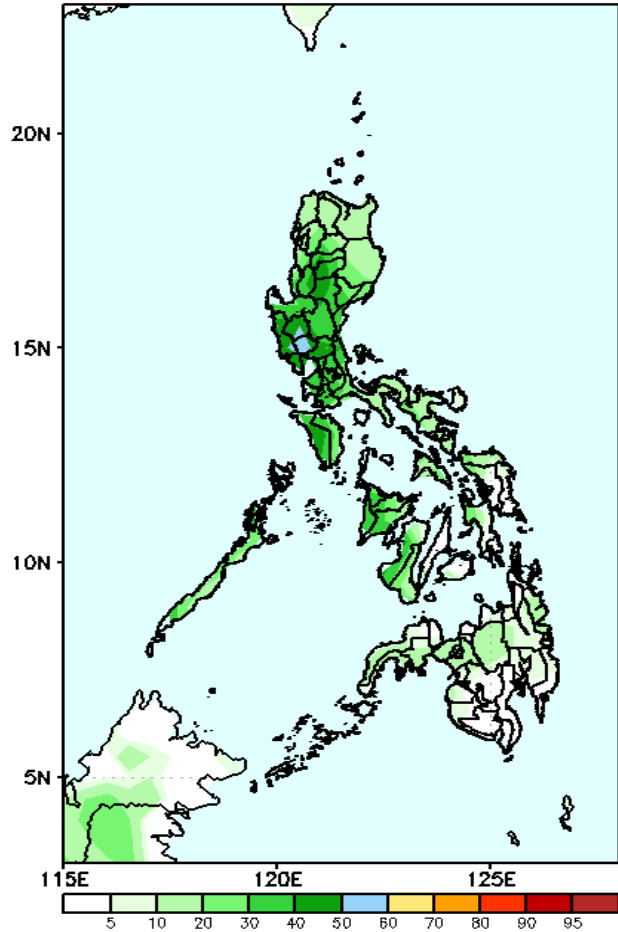


High probability of rainfall to exceed 50mm in most parts of Luzon, Visayas, Zamboanga Peninsula Misamis Occ, Lanao del Norte and Bukidnon while less likely for the rest Mindanao during the forecast period.

Exceedance Probability > 100/150/200 mm

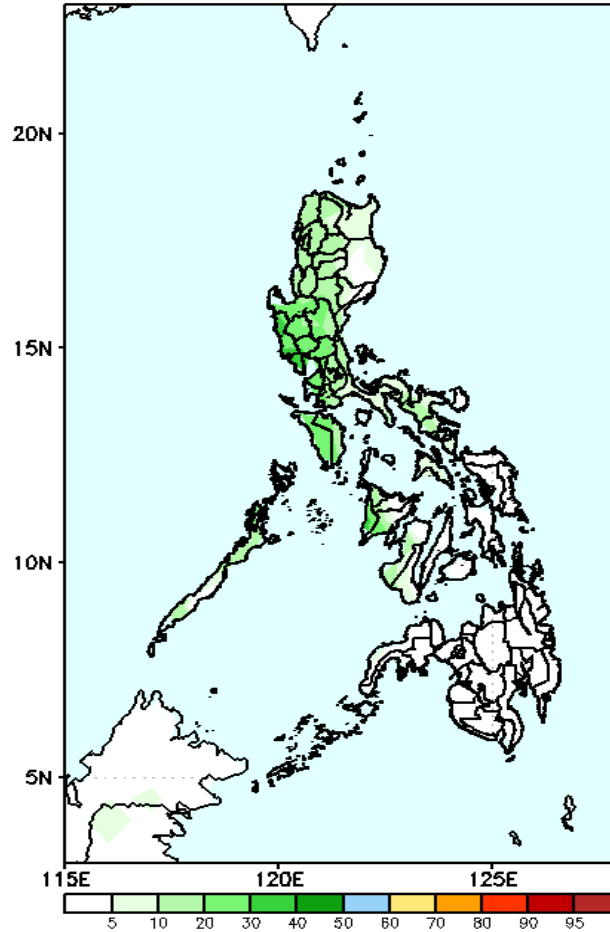
Week 2: Sep 23-29, 2022

GEFS Week-2 Exceedance Prob. > 100mm
Valid: 20220926 - 20221002



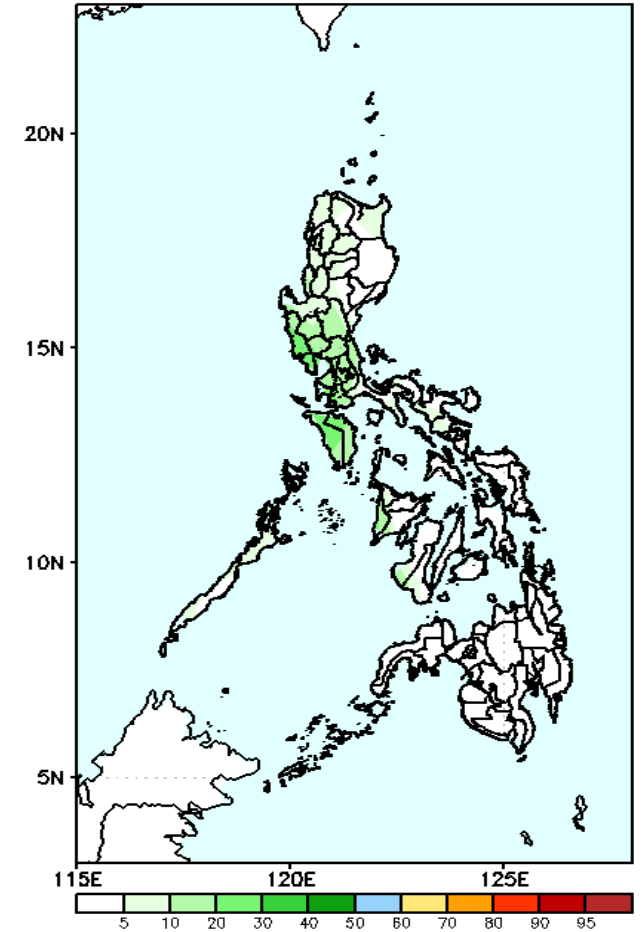
Low probability of rainfall to exceed 100mm in most parts of the country during the forecast period.

GEFS Week-2 Exceedance Prob. > 150mm
Valid: 20220926 - 20221002



Low probability of rainfall to exceed 150mm in most parts of the country during the forecast period.

GEFS Week-2 Exceedance Prob. > 200mm
Valid: 20220926 - 20221002

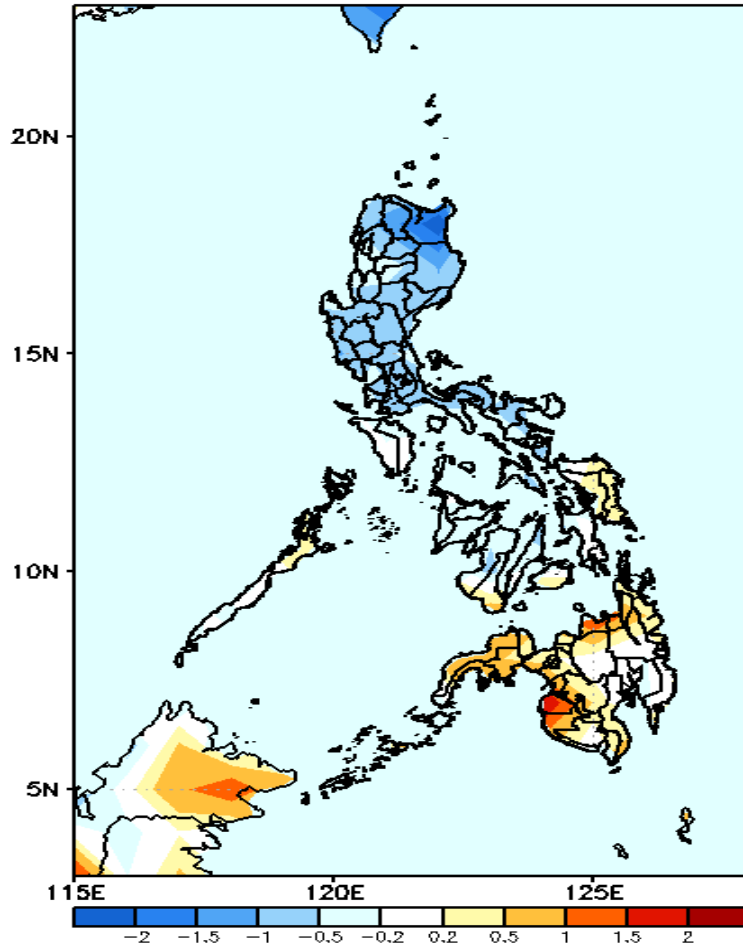


Low probability of rainfall to exceed 200mm in most parts of the country during the forecast period.



GEFS Week-1 & 2 Forecasts: T2m Anomaly

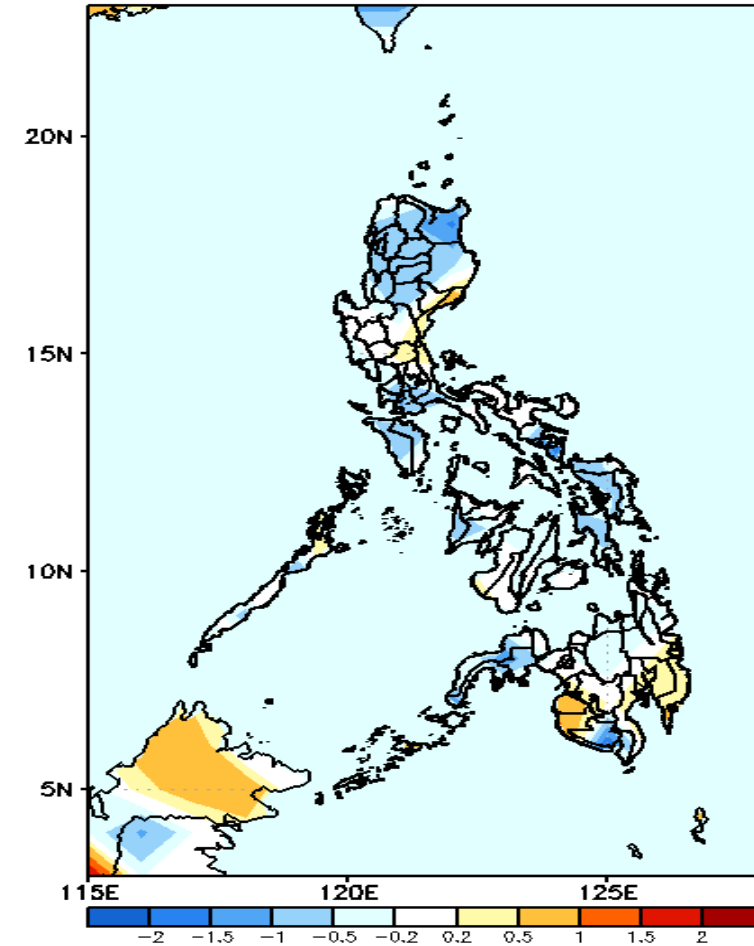
GEFS Week-1 T2m Anomaly
Valid: 20220919 - 20220925



2m Temperature Week 1: Sep 19-25, 2022

Slightly cooler to cooler than average surface air temperature will likely experience in most parts of Luzon, near to slightly warmer temperature in most of Visayas, Bukidnon and Davao Region while slightly warmer to warmer than average temperature is expected in Mindanao during the forecast period.

GEFS Week-2 T2m Anomaly
Valid: 20220926 - 20221002



2m Temperature Week 2: Sep 26- Oct 02, 2022

Near to slightly cooler than average surface air temperature will likely experience in most parts of the country except in Aurora, Rizal, Bulacan, Maguindanao, Sultan Kudarat and Davao Region, where slightly warmer to warmer than average temperature is expected during the forecast period.